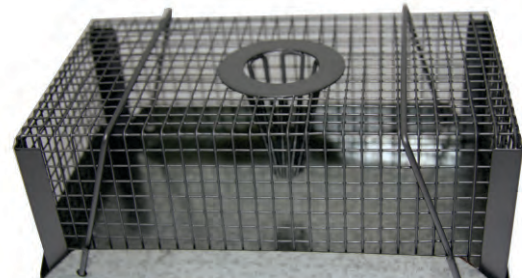


USAGE GUIDE

TIPPER
STEEL



WIRE MESH TRAP



TIPPER



SQARE
TRAP



DISTRIBUTED BY:



GARRARDS
"SERVICE WITH INTEGRITY"



WHERE TO USE **TOPPER** RODENT STATION

Bait & Live Station Location is the key to success

Placement of the bait station will impact on the overall effectiveness of a rodent-control program.

Know the Situation

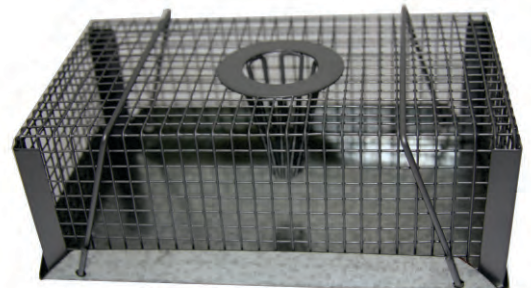
Where a bait station, or more likely a group of stations, is located has a lot to do with the successful rodent-control effort. It is important to know where the rats or mice are nesting, travelling and feeding. Bait station placement based on rodent behaviour is crucial for successful rodent control.

Here are some things to consider when choosing the right locations for bait stations:

- ◆ Place stations on runways where rodents are most likely to encounter them. For Norway rats this is usually on the ground and for roof rats this usually means up high. In targeting mice it means placing the station high, low and in between.
- ◆ Maintain an uninterrupted supply of rodenticide. Empty bait stations mean missed opportunities to kill more rodents.
- ◆ When two or more consecutive stations exhibit signs of feeding, add stations in between to make sure rodents are not nesting or are getting into the structure between the active stations.
- ◆ Place bait stations where non-target animals such as possums, dogs and cats are least likely to interact with the station.
- ◆ For commercial rodent control around food facilities, become familiar with applicable National Pest Management Association (NPMA) and third-party sanitation audit guidelines and standards.
- ◆ Due to their fear of anything new in the living environment, Norway and roof rats may need coaxing to get them to enter stations the first time. To solve this, place a non-toxic food attractant just inside both entries. Consider peanut butter, fish or liver-flavoured cat food, apple slices, bread or candy. DO NOT allow the attractant to make contact with the rodenticide.
- ◆ Outdoor control should be placed closely to intercept rodents coming in from likely harbourages such as infested buildings next door or dense vegetation. Space them further apart where rodent pressure is likely to be light, such as long and large paved areas.
- ◆ Don't clean stations too often. The scents from previous visitors (rats & mice) encourage new visitors to enter and feed.
- ◆ Rodents have a phenomenal sense of taste. Be very careful not to contaminate rodenticides with bad tasting chemicals which may be on hands, such as gasoline and nicotine. Do not spray insecticide on the bait. Certain insecticides, such as some pyrethroids may prevent feeding even if they are only sprayed in the stations on the floor.
- ◆ Rodent populations and account structures change, so keep this in mind when choosing a method to anchor bait stations. They should be relatively easy to relocate to respond to situation changes.
- ◆ Finally, look for signs of rodent activity throughout the account and then take the fight to them. Be creative, safe, persistent, and law abiding in the battle against rodent pests.

HOW TO USE WIRE MESH TRAP

The wire trap is a ready to use live catch trap. Placement is critical to the success of the trap. For placement options please read above in the 'Where to use' section of this guide.



TIPPER MULTI-LOCK

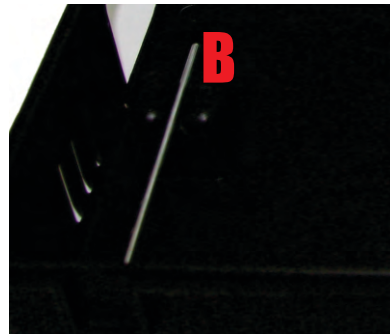
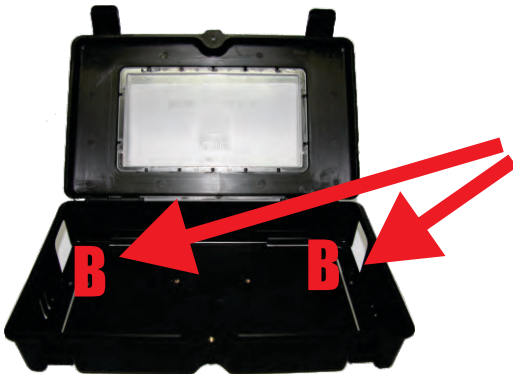
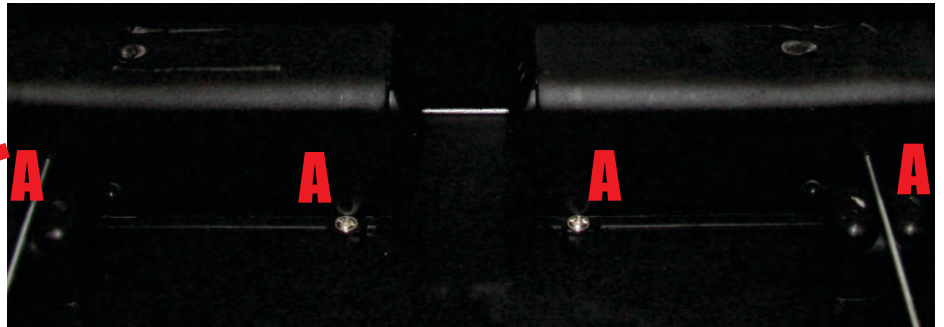
The TIPPER unit can be locked either by the two (2) plastic clips, the screw in thumb screw or both as pictured.

- A: Plastic clips
- B: Thumb screw



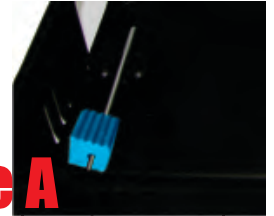
HOW TO USE TIPPER BAIT STATION MODE

To transform the TRIPPER station into a baiting station, simply remove the four (4) screws that hold the lever catch system in place as shown. A: Screws



Place your baits onto the two (2) removable metal rods provided as shown. B: Removable metal rods

Example A



example of rodent bait placed on metal rod

HOW TO USE TIPPER LIVE STATION MODE

The TIPPER station comes ready to use as a live catch station, attractant can be applied. Attractant can be placed either on the two (2) removable metal rods (as per example above in *Example A*) or just casually inside the station itself.

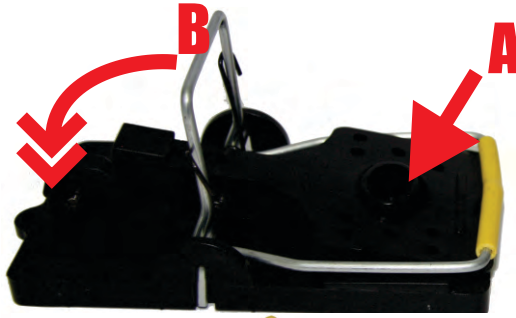


HOW TO USE **SNAP** MOUSE & RAT TRAPS

The SNAP TRAPS are easy to setup with only one motion. Simply pull back the lever as shown until it catches onto the automatic latching system.

Place your attractant in location A

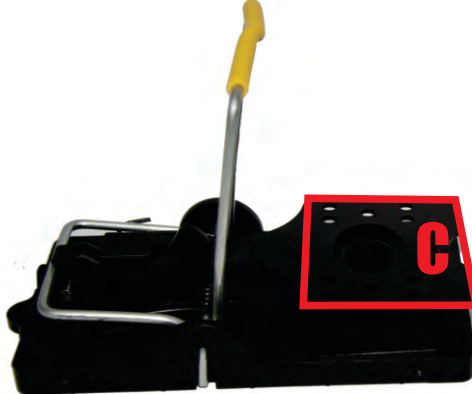
A: Bait area



To set the trap, start by pulling the lever towards the automatic latch.

B: Lever

The trap is now set (as shown in the picture).



WARNING

This is the trigger pressure point. May cause harm if triggered on self.

C: Trigger pressure point

HOW TO USE **TIPPER** STEEL



Example with glueboard

Ready to use, TIPPER STEEL just requires attractant. Place attractant inside the station. TIPPER STEEL can also be used with glue boards.

TIPPER STEEL can be placed along walls inside commercial or domestic buildings. Clear lid used for sighting contents of device without having to open. For glueboards please call your local pest control distributor.