

FMC

Tech Note



What is Astro Aerosol?

Astro Aerosol is a ready to use aerosol formulation containing the synthetic pyrethroid, permethrin. The product is packaged in 330g aerosol canisters and is registered for the residual control of ants, cockroaches, fleas, spiders, and silverfish. Astro Aerosol can be used in domestic, commercial, institutional, and industrial premises and has been developed specifically for the pest control industry in Australia.

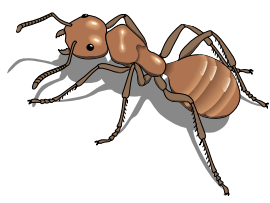
How to use Astro

Astro Aerosol is a long lasting residual insecticide specifically formulated to control crawling insects in industrial applications. The product may be used in three ways, either as an effective flushing agent, a fast acting knockdown spray, or as a surface residual. For knockdown spray the product can be applied

directly to target insects, and/or for residual control apply Astro to surfaces for up to two months barrier protection. Particular attention should be given to areas where insects congregate, crawl, or rest.

Flushing ability

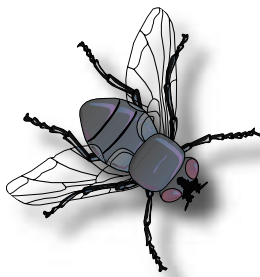
Professional pest control operators must make a thorough inspection of premises prior to making any recommendations. Pest infestations such as cockroaches are not always obvious upon first inspection, but with the correct use of a range of tools such as a map of the premises, a torch, and an effective flushing agent, infestations can be detected. Astro aerosol is an effective flushing agent and thus can form a vital part of a PCO's inspection kit.



Superior Solvent System

Astro Aerosol utilises n-paraffin solvents, which means that the formulation has a low volatility (i.e. lower vapour pressure at room temperature, higher flash point and slower drying times), which in turn provides the product with optimal efficacy. The low-odour hydrocarbon solvent system also means there is little product odour.

Paraffin solvents provide superior product efficacy as the products have better wetting and penetration capability through the insect cuticle of pests such as cockroaches. The cuticle is a waxy layer that protects insects from desiccation. With this greater ability to gain entry into the target insect, Astro increases it's effectiveness in controlling target insects without increasing the amount of chemical used in each application.



Packaging

Astro Aerosol is packaged in a convenient ready to use 330g canisters. A 360-degree valve system allows spraying from all angles, including upside down. Also supplied with each canister is an extension tube that can be fixed to the canister nozzle allowing more directed sprays and application into hard to reach areas such as cracks and crevices where many insects frequent and breed.

Supporting Literature

A Material Safety Data Sheet and AQIS Instrument of Approval are available for Astro Aerosol. The product is approved by AQIS under category 16 as a pesticide type D.



Features of Astro Aerosol

- Exhibits flushing action
- Fast knockdown and long residual
- Ready to use formulation
- Extension tube allows crack and crevice application
- 360-degree spraying ability
- Spray actuator button designed to give optimized spray pattern
- Synthetic Pyrethroid active ingredient
- Superior solvent formulation
- Cost effective
- Specifically designed for PCO's
- AQIS approved
- Manufactured by FMC – a research and development based company



Table 1: Summary of the Directions For Use Table for Astro Aerosol.

SITUATION	PESTS	COVERAGE	CRITICAL COMMENTS
Commercial, Institutional and industrial premises Food preparation and storage areas	Ants, Cockroaches, Fleas, Spiders & Silverfish	One can will treat 25-35 m ² (depending on the porosity of the sprayed surface).	<ol style="list-style-type: none"> 1. Spray surfaces from a distance of 15-20 cm to ensure even coverage. 2. Remove all food and food utensils from area to be sprayed. Turn off all fans, air conditioners, gas heaters and any source of naked flame. 3. Spray directly onto insects for fast kill. 4. For a barrier protection of surfaces spray the surface to be treated to the point of runoff. 5. Use care when spraying into all cracks and crevices around the eaves, windows and doors. 6. Leave the area that has been sprayed for up to 2 hours and thoroughly wipe down all food preparation areas with hot water before food re-enters the room.

Note: This table has been included as a reference only. Prior to using this product it is imperative that Pest Managers read the actual product label in its entirety.